

Shanklin® Automatic L-Sealers

Shrink Packaging Machinery

Consistent
Quality,
Performance,
and Reliability



Shanklin[®] Automatic L-Sealer

OPTIONS AT A GLANCE

By selecting just the right combination of options, you can customize your Shanklin[®] A-Series Automatic L-Sealer for the ultimate performance, efficiency and value!

INFEED OPTIONS



Adjustable Flight Lug Infeed



72" Product Separating Infeed



Adjustable Flight Bar Infeed

AVAILABLE OPTIONS

| OPTIONS | A-26A | A-27A | A-28A |
|---------------------------------------|-------|----------|-------|
| Adjustable Flight Bar Infeed Conveyor | X | X | |
| Adjustable Flight Lug Infeed Conveyor | X | X | |
| Product Separating Infeed Conveyor | X | X | X |
| Closing Discharge Conveyor | X | X | X |
| EZ Load Compact Centerfolder | X | X | X |
| Dual Roll Compact Centerfolder | X | X | X |
| Dual Infeed Eyes | X | X | X |
| Print Registration | X | X | X |
| Casters | X | X | X |
| EZ Film Thread Infeed Table | X | Standard | |
| Large Capacity Selvage Winder | X | X | X |
| Stainless Steel Removable Infeed | X | X | |
| Custom Options | X | X | X |

For more information, please contact your Shanklin[®] distributor.

Meet the Shanklin® “A” Team

MODELS A-26A, A-27A, AND A-28A

The Shanklin® A-Series of compact, rugged, and versatile Automatic L-Sealers offers gentle product feed and straight line product flow that make them ideally suited for handling a wide variety of products. A-Series machines feature conveyor-fed automatic operation and are capable of processing up to 35 packages per minute, plus the L-Seal design provides great flexibility and quick product change. Each will accept randomly spaced product, fed either automatically or by hand.

- **Reliable**—Equipped with programmable controllers for simplicity of wiring and ease of troubleshooting; facilitates easy machine set-up and adjustment
- **Flexible**—Photoelectric sensor system automatically compensates for package length change; automatic film advance system allows light, flexible products to be fed through the machine with ease
- **Versatile**—Offers easy product and size changeover and the ability to handle virtually any type of film (depending on sealing system); most features are fully adjustable for maximum convenience
- **Safe**—Electrical controls are UL-listed (for meeting the highest safety standards); sealing area is protected by an electrically interlocked transparent hood through which the sealing process may be safely observed; hood may be easily lifted for full access when necessary
- **Secure**—Password protection capability safeguards sensitive machine functions
- **Easy to use and maintain**—EZ load unwind feature offers easy loading and threading capability; machine controls are located in front for quick and easy access

STANDARD VALUE-ADDED FEATURES



User Friendly Control Panel



Color Coded Touch Screen



Automatic Film Puller



EZ Load Film Unwind

THE PERFECT PARTNER

Pair your Shanklin® Automatic L-Sealer with a Shanklin® Shrink Tunnel for superior wraps every time!



Quality Comes Standard

MODEL A-26A

The A-26A features adjustable height seal jaws and can automatically wrap a wide range of products, including high profile or short length items, at speeds up to 35 packages per minute. It is also available in a USDA approved model.



MODEL A-27A

The A-27A possesses all of the same features as the A-26A, but with slightly larger allowances in its maximum seal size, product size, and film width specifications. EZ film threading is standard on the A-27A, which allows operators to move machine components for full access and visibility when threading film. The A-27A is also available in a USDA approved model.



MODEL A-28A

The large-capacity workhorse model of the A-Series, the A-28A features adjustable height seal jaws specially designed for products too large to fit through the A-26A or A-27A, and is equipped with a heavy duty discharge conveyor to wrap much heavier product than most automatic L-Sealers can handle.

SHANKLIN® SPECIFICATIONS

AUTOMATIC L-SEALER MODEL

| | Model A-26A | Model A-27A | Model A-28A |
|----------------------------------|--|---|---|
| Seal Size* | 15"W x 21"L | 21"W x 33"L | 33"W x 43"L |
| Max. Product Height | • 5.5" | • 7.5" standard • 9.5" with optional 10" height kit | • 9.5" standard • 11.5" with optional 12" height kit |
| Min. Product Length | • 4" Standard • 1.5" with optional closing conveyor | • 4" Standard • 2.75" with optional closing conveyor | • 7.5" standard • 5" with optional closing conveyor |
| Max. Product Length** | 20" | 31" | 41" |
| Conveyor Belt Width | 14.5" | 17" | 30" |
| Max. Film Width (Folded) | 24" | 30" | 36" |
| Max. Film Width (Flat) | 42" with compact centerfolder | | 60" with large compact centerfolder |
| Conveyor Height | Adjustable 31.5" – 37.5" without casters / 35.5" - 41.5" with casters | | |
| Product Speeds*** | Up to 35 packages per minute (standard) | | 25 packages per minute max. |
| Longitudinal and Transverse Seal | Wide Fin Hot Knife | | |
| Power | 230V, 15 Amps, 60 Hz, 1 phase & other voltage options are available | | |
| Compressed Air | 0.5 C.F.M. free air at 60 psi | | |
| Safety Devices | <ul style="list-style-type: none"> • Emergency stop button instantly stops all machine functions until manually reset • A transparent hood, interlocked electrically with the automatic sequencing circuit, covers the sealing area; gas cylinders support the hood when it is lifted to allow access • Tamper-resistant controls • Low voltage sensors and actuators • Film clamp proximity sensors ensure safe sealing arm jaw closure • UL Certified electrical chassis | | |

* Width plus height cannot exceed seal jaw width

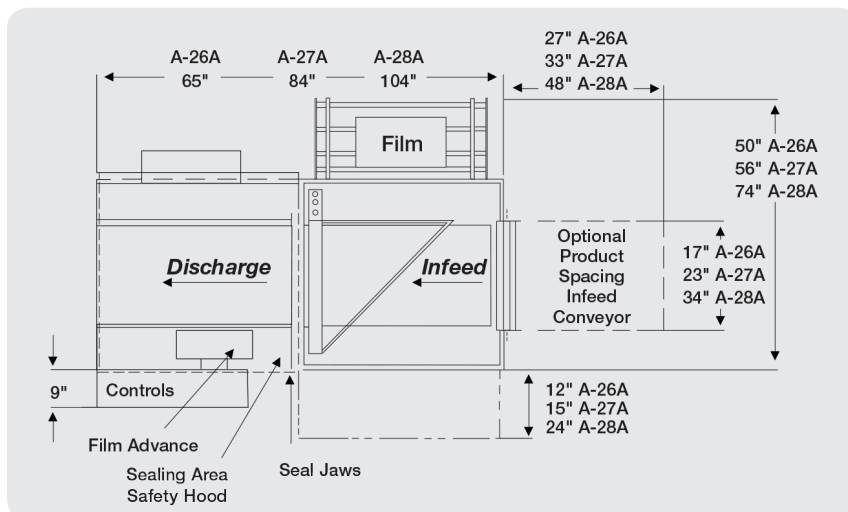
** Length plus height cannot exceed seal jaw length

*** Dependent on product and application

USDA APPROVED MODELS AVAILABLE

® Reg. U.S. Pat. & TM Off.

A-26A/A-27A/A-28A PLAN VIEW





A TRADITION OF EXCEPTIONAL CRAFTSMANSHIP

Shanklin's® dedicated force of skilled craftsmen take pride in their ability to produce a truly superior product. Most of the specially manufactured parts that go into Shanklin® machines are produced in our own factory, and our extensive use of computer-controlled equipment ensures maximum quality and consistency at minimum cost.

Shanklin® machines are assembled by highly skilled technical professionals who excel at meeting our exacting specifications. Each machine is then carefully examined, tested and run in a typical application to ensure its optimum operation prior to shipping.

SealedAir.com

台灣希悅爾股份有限公司
桃園市蘆竹區長安路二段102號
Tel : 03-2165030

1-800-648-9093
SealedAir.com/product-care

@SealedAirPack @SealedAirPack

Corporate Office: Sealed Air Corporation (US)
8215 Forest Point Boulevard, Charlotte, NC 28273

© 2016. Sealed Air Corporation. All Rights Reserved. Shanklin® and the Sealed Air & Trillian Design™ are trademarks of Sealed Air Corporation (US). www.sealedair.com
SP-201 5/16